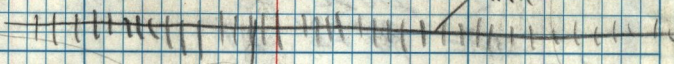


# SWAMPS

30 29

R.R.



30A

29A

33B

31A

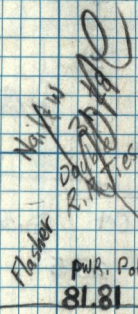
30 29

31 32

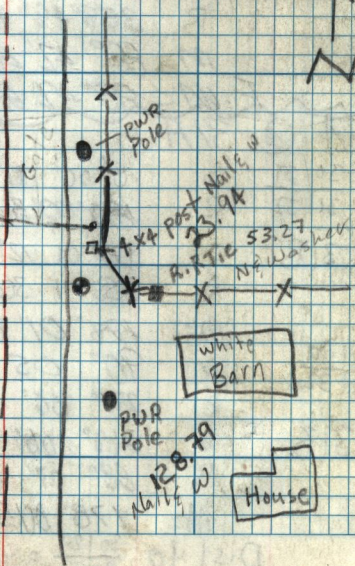
No 1/4 cor.

2700 N

1963	30	29
	31	32



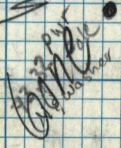
8181



2600 N

or 2700?

storm Drain  
M.H.  
x in conc.  
30-12



5100 W.

128.79  
N.W. 1/4

11-29-66